

CL 500

New Generation Cleaning Laser



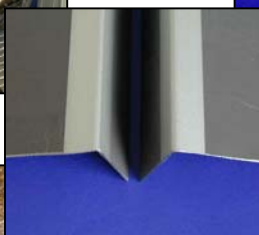
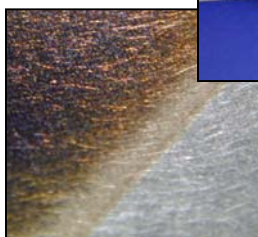
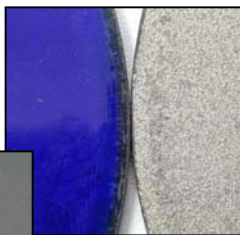
- **500 W average power (CW)**
- Pulse power up to 400 kW
- Diode pumped beam source
- Real time controlling
- Field bus-communication for automated processes
- Air or water cooled version
- Beam switch option
- Designed for heavy duty industrial applications
- Laser Class 4 Product

Backpack
 CL 20
 CL 50
 CL 80 SP
 CL 150
 CL 300
CL 500
 CL 1000
 Workstation

Laser optics available



Application examples



- Pre-treatment for adhesive bonding
- Complete or partial de-coating
- Precision mold cleaning
- Pre-treatment for weld inspection
- Removes oxides, oil, grease & production residues
- Structuring of metallic surfaces
- Rust removal

Technical Data

Overview

Laser systems:

Backpack
 CL 20
 CL 50
 CL 80 SP
 CL 150
 CL 300
CL 500
 CL 1000
 Workstation

Matching optics:

OS A 70
 OS H 70
 Stylus



Standard system features:

CL 500

- ▶ Cooling system air-water
- ▶ Diode pumped laser module
- ▶ Laser optic type OS H 70 L
- ▶ Fiber (length: 10m)

Options:

- ▶ Cooling system water-water
- ▶ Beam switch with 2nd laser optic

The CL 500 laser system is designed for a wide variety of industrial processes. It has an average laser power of 500watt. The diode pumped laser module enables near maintenance-free use. A fiber optic light guide leads the laser light to the processing head, making this laser system well suited for automated processing. CAN or Profibus are available as options for automated applications. Typical uses include pre-treatment for adhesive bonding, de-coating, and weld inspection pretreatment. High feed rates are possible with this unit.

The integrated cooling system and compact construction makes for a highly mobile 500watt laser. Other media like compressed air or protective gas are not necessary.



CL 500	Technical Data
Operating cost per hour	\$7.50
Size (l x w x h) [mm³]	795 x 1250 x 1270
Weight (approx.) [kg]	350
Cooling System	water - water (<19°C external cooling water) optional air-water
Specified power of the beam source [W]	500
Wavelength [nm]	1064
Power supply (German vision)	400 V/16A
Maximum power consumption [kWh]	6 (10 for air cooled version)
Minimum / Maximum ambient temperature [°C]	10/38 (32 for air cooled version)
Humidity [%]	< 90, non-condensing
Laser class	4

Subject to technical changes